

Wireless Antenna Installation to Entergy Poles: Basics

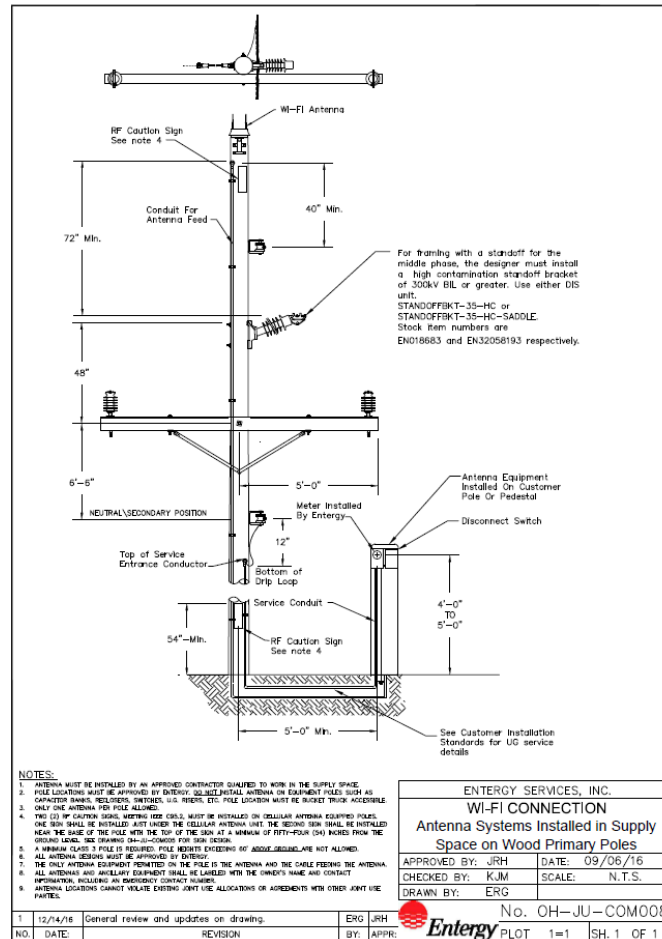
Meant to be used as GENERAL
information

Basic Rules and Concerns

- Concerns
 - Safety
 - Structure Integrity: Wind load
- Basic Rule
 - One (1) Antenna per pole
- Definition
 - Antenna: usually metallic device (such as a rod or wire) for radiating or receiving radio waves a
TV antenna

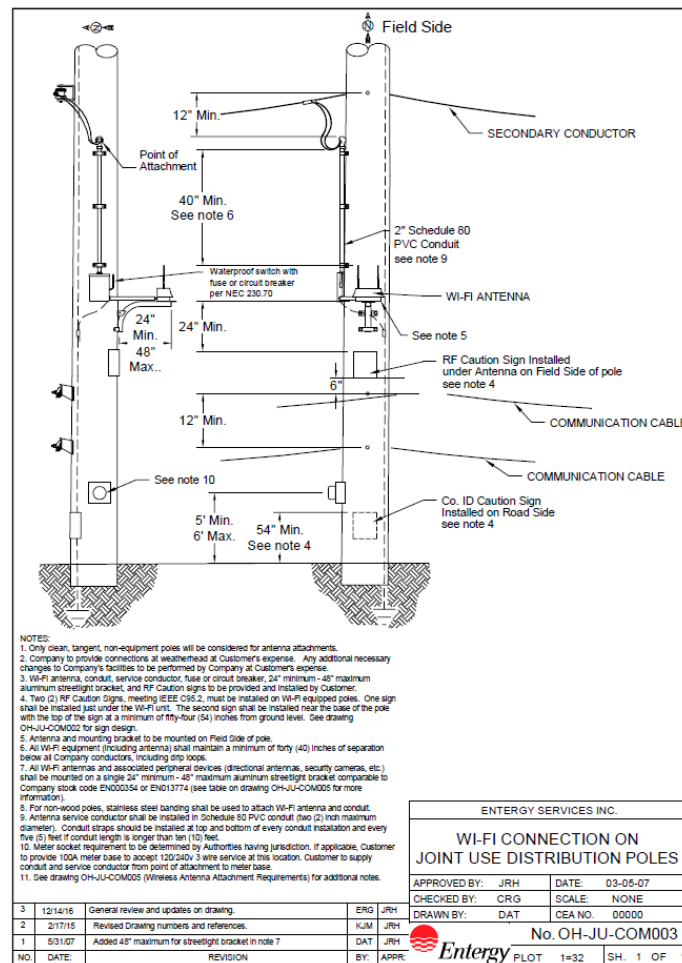
Pole Top Antenna

Everything Else is OFF pole



Antenna placed in Communications Area

Meter, etc ... can be placed on pole



Not Approved

Antenna "SYSTEM" mounted on pole top

