

# DATA LINK

## QUICK START GUIDE - TRAINING SCENARIOS



The Entergy name and logo are registered service marks of Entergy Corporation and may not be used without the express, written consent of Entergy Corporation.

# Contents

DATA LINK QUICK START GUIDE - TRAINING SCENARIOS	I
INTRODUCTION	1
DATA LINK SUPPORT	1
BROWSER REQUIREMENTS	1
USER GUIDE	1
SAMPLE DATA	1
SCENARIOS	2
USAGE REPORTS SCENARIOS	2
LOAD CURVES (PGS 7-12)	3
#1 - LOAD CURVE " GRAPH" (1-2-3 STEPS)	3
#2 - LOAD CURVE " MULTIPLE SITES"	4
#3 - ADDITIONAL FUNCTIONALITY W/ " INTERACTIVE GRAPH"	6
COMPARE LOADS (PGS 16-25)	8
#4 - COMPARE LOADS (SAME SITE ' 07 VS ' 08)	8
#5 - COMPARE LOAD (SAME AS #4 - TABLE)	10
DEMAND PROFILE (PGS 27-28)	10
#6 - DEMAND PROFILE	10
#7 - LOAD DURATION CURVE (PGS. 28-30)	12

# INTRODUCTION

## DATALINK SUPPORT

DataLink products are available for use 24 hours a day, seven days a week.

The web address for DataLink is [www.energy.com/demand](http://www.energy.com/demand).

If you forget a user name or password, you can contact the **DataLink Hotline @ 1-877-DEMAND1 (1-877-336-2631)**.

## BROWSER REQUIREMENTS

Using standard browser technologies, For certain tools that use Java technology, you must have an Internet browser meeting the minimum requirements that follow.

- ❑ Netscape—Version 4.7 or higher, with Java enabled
- ❑ To install Java, go to [www.java.com](http://www.java.com) and follow the instructions provided.

## USER GUIDE

Examples provided can be referenced back to the user guide for specific instruction and greater detail.

## SAMPLE DATA

Web address: <http://energy.enerwise.com>

Logon: [entuser](#)

Password: [energy](#)

## SCENARIOS

### USAGE REPORTS SCENARIOS

This training document follows the DataLink User Guide (pages 7-21)

- ❑ **Load Curves (examples 1-3)**  
Generates data for the period of time identified.
- ❑ **Compare Loads (examples 4-5)**  
Compare electricity loads for multiple sites by varying date ranges or same site for different periods of time.
- ❑ **Demand Profile (example 6)**  
Generate report reflecting a single site' s peak demand on a day-by-day basis, over selected time range, or the aggregate demand for all sites.
- ❑ **Load Duration Curve (example 7)**  
Generate report showing percentage of time that a site' s demand meets or exceeds a given level.

# LOAD CURVES (PGS 7-12)

## #1 – LOAD CURVE “ GRAPH” (1-2-3 STEPS)

### 1. Pick a time (Use calendar)

Start Date: 05-01-2008 (12:15:00 a.m.)

End Date: 06-01-2008 (12:00:00 a.m.)

*Dates above can be chosen to match the customers' bill although a minor variance may exist due to an unknown meter poll time.*

### 2. Select your channels/sites

Entergy College Building

✓ kWh

### 3. Decide how you want to see it

➤ Interactive Graph

➤ Daily

➤ US/Central

Input:

**1 Pick a time**  
All Interval data is requested and displayed using interval ending time.  
E.g. To request a single day's data, select/enter Start Date: 01/01/2003 00:15  
End Date : 01/02/2003 00:00

Choose a period from this list: Use Calendar

Start Date: 05-01-2008 12 15 AM

End Date: 06-01-2008 12 00 AM

**2 Choose your channels**

Entergy College Bldg [ Daily V ] 01-07-2003 to 07-21-2008

kWh  kW  kVarh  kVar  kVa  PF

Entergy Hospital [ Hourly V ] 02-11-2004 to 07-17-2008

kWh  kW  kVarh  kVar  kVa  PF

Entergy Industrial [ Daily V ] 11-28-2001 to 07-21-2008

kWh  kW  kVarh  kVar  kVa  PF

Include totals for the channels I select

**3 Decide how you want to see it**

Create a: Interactive Graph

Summarized by: Daily

Time Zone: US/Central

Create Reset

Result:



Note: usage drops to 1,637 kWh on 5/18/2008 (Sunday). Since this is a college building, everything may have been shut down – no classes.

## #2 – LOAD CURVE “ MULTIPLE SITES”

### 1. Pick a time (Use Calendar)

Start Date: 05-01-2008 (12:15:00 a.m.)

End Date: 06-01-2008 (12:00:00 a.m.)

*Dates above can be chosen to match the customer' s bill although a minor variance may exist due to an unknown meter poll time.).*

### 2. Select your channels/sites

Entergy College Building

✓ kWh

Entergy Hospital

✓ kWh

2<sup>nd</sup> site added for this example, everything else remains the same as #1 example

### 3. Decide how you want to see it

➤ Interactive Graph

➤ Daily

➤ US/Central

## Input:

Data is available from Wednesday, November 28, 2001 10:30:00 AM to Monday, June 16, 2008 09:15:00 AM  
Availability of data may vary from site to site.

1

### Pick a time

All Interval data is requested and displayed using interval ending time.

E.g. To request a single day's data, select/enter Start Date: 01/01/2003 00:15  
End Date : 01/02/2003 00:00

Choose a period from this list: Use Calendar

Start Date: 05-01-2008 12 15 AM

End Date: 05-31-2008 12 00 AM

2

### Choose your channels

Entergy College Bldg [ Daily V ] 01-07-2003 to 06-16-2008

kWh  kW  kVarh  kVar  kVa  PF

Entergy Hospital [ Hourly V ] 02-11-2004 to 06-16-2008

kWh  kW  kVarh  kVar  kVa  PF

Entergy Industrial [ Daily V ] 11-28-2001 to 06-16-2008

kWh  kW  kVarh  kVar  kVa  PF

Include totals for the channels I select

3

### Decide how you want to see it

Create a: Interactive Graph

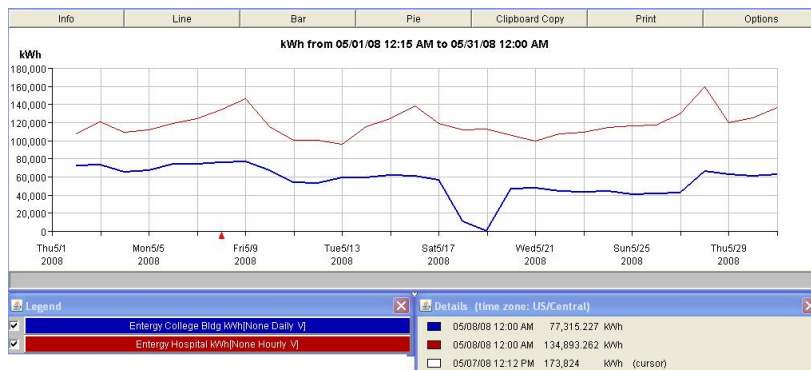
Summarized by: Daily

Time Zone: US/Central

Create Reset

## Result:

Main window



Channel Legend Window

Details Window

### #3 – ADDT' L FUNCTIONALITY W/ " INTERACTIVE GRAPH"

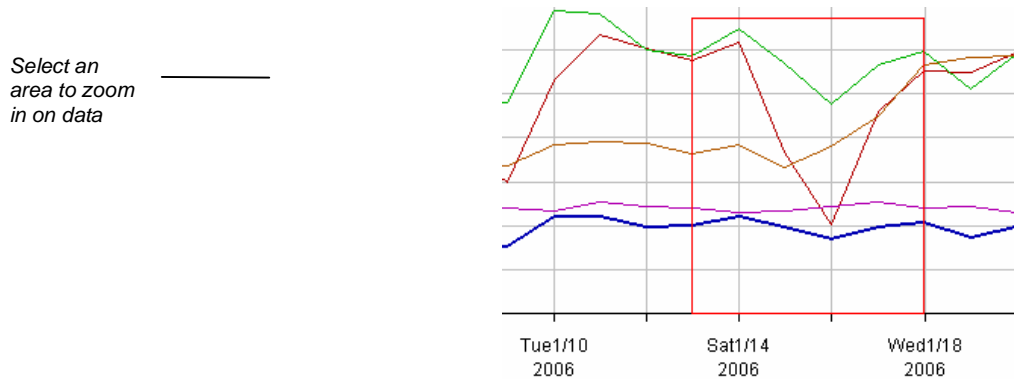
#### a) Zoom in and out on the line graph

With line graphs you can click-drag within the graph to select any data area for zooming in.

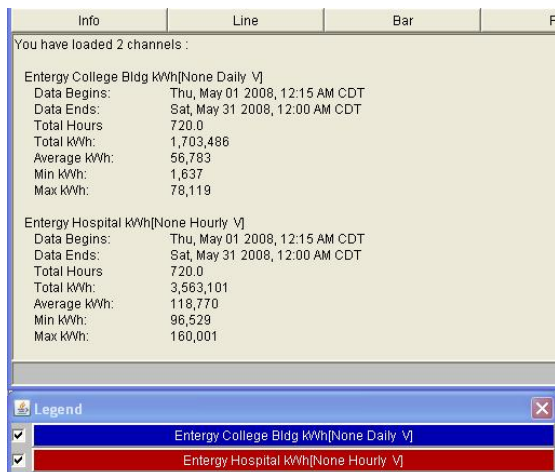
To restore the graph to the default view, right-click your mouse, while positioned on the graph.

The detail of the data points for any view will depend on the summarization unit (e.g., monthly, daily, hourly) you selected when configuring the graph.

With more data points, the zoom becomes more useful.



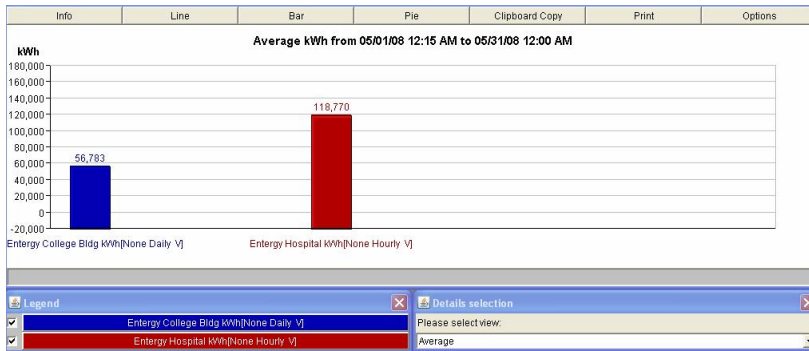
#### b) Display Info



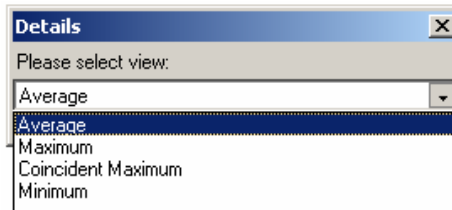
Info display

c) Bar Chart

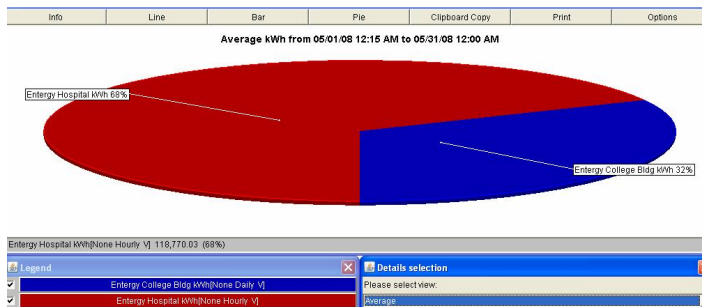
Bar graph display



Detail window for bar chart



d) Pie Chart



## COMPARE LOADS (PGS 16-25)

### #4 – COMPARE LOADS (SAME SITE ' 07 VS ' 08)

#### 1. Select sites to compare

Site 1: Entergy College Bldg - kWh

Start Date: 05-01-2008 (12:15:00 a.m.)

End Date: 06-01-2008 (12:00:00 a.m.)

Label: May 2008

Site 2: Entergy College Bldg - kWh

Start Date: 05-01-2007 (12:15:00 a.m.)

End Date: 06-01-2007 (12:00:00 a.m.)

Label: May 2007

Site 3: none

Site 4: none

Site 5: none

#### 2. Select options

Create a: Static Graph

Summarized by: Daily

Time Zone: US/Central

Input:

**Entergy Sample**  
**Compare Loads**

Data is available from Wednesday, November 28, 2001 10:30:00 AM to Monday, June 16, 2008 12:15:00 PM  
Availability of data may vary from site to site.

**Select Sites to Compare**  
All Interval data is requested and displayed using interval ending time.  
E.g. To request a single day's data, select/enter Start Date: 05/01/2003 00:15 End Date: 05/02/2003 00:00

Use Calendar

**Site 1:**  
Entergy Sample - Entergy College Bldg kWh

Start Date: 05-01-2008 12 15 AM

End Date: 06-01-2008 12 00 AM

Label: May 2008

**Site 2:**  
Entergy Sample - Entergy College Bldg kWh

Start Date: 05-01-2007 12 15 AM

End Date: 06-01-2007 12 00 AM

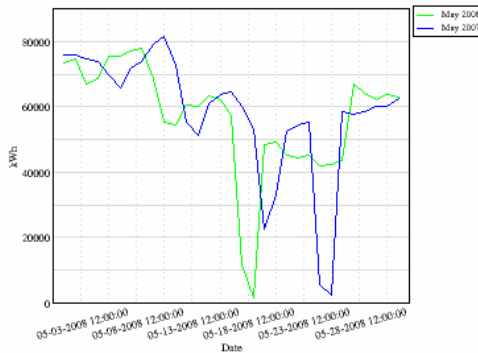
Label: May 2007

**Site 3:**  
None

Results:

Static Graph for Entergy Sample  
for Thursday, May 1, 2008 12:15:00 AM through Sunday, June 1, 2008 12:00:00 AM  
and Tuesday, May 1, 2007 12:15:00 AM through Friday, June 1, 2007 12:00:00 AM

Static graph display



Summary text data with static graph display

**Summary\***

Channel	Min Value	Min Occurred At	Max Value	Max Occurred At	Sum	Average
May 2008	1,636.57	05/19/2008 00:00:00	78,118.74	05/09/2008 00:00:00	1,766,290.30	56,977.11
May 2007	2,369.58	05/26/2007 00:00:00	81,758.72	05/11/2007 00:00:00	1,808,751.95	58,346.84

\*Min Value Excludes Zeros

**Load Factor\*\***

Site Label	Load Factor
May 2008	65.23%
May 2007	64.94%

\*\*Only those sites with either kW or kWh selected can display load factor.

## #5 – COMPARE LOAD (SAME AS #4 – TABLE)

Table for Entergy Sample  
for Thursday, May 1, 2008 12:15:00 AM through Sunday, June 1, 2008 12:00:00 AM  
and Tuesday, May 1, 2007 12:15:00 AM through Friday, June 1, 2007 12:00:00 AM

Time	May 2008	May 2007
05/02/2008 00:00:00	73,483.8€	75,892.9€
05/03/2008 00:00:00	74,864.4€	76,054.4€
05/04/2008 00:00:00	67,022.6€	74,911.9€
05/05/2008 00:00:00	68,576.3€	73,730.97
05/06/2008 00:00:00	75,388.9€	69,867.4€
05/07/2008 00:00:00	75,407.11	65,774.6€
05/08/2008 00:00:00	77,315.2€	71,972.3€
05/09/2008 00:00:00	78,118.74	73,891.84
05/10/2008 00:00:00	68,607.4€	79,259.2€
05/11/2008 00:00:00	55,469.5€	81,758.7€
05/12/2008 00:00:00	54,594.6€	72,627.0€
05/13/2008 00:00:00	60,499.1€	55,205.77
05/14/2008 00:00:00	60,078.0€	51,187.0€
05/15/2008 00:00:00	63,295.4€	61,097.81
05/16/2008 00:00:00	62,358.37	63,640.8€
05/17/2008 00:00:00	57,443.4€	64,570.0€
05/18/2008 00:00:00	11,699.9€	60,228.2€
05/19/2008 00:00:00	1,636.57	53,170.41
05/20/2008 00:00:00	48,461.54	22,760.6€

### Summary\*

Channel	Min Value	Min Occurred At	Max Value	Max Occurred At	Sum	Average
May 2008	1,636.57	05/19/2008 00:00:00	78,118.74	05/09/2008 00:00:00	1,766,290.30	56,977.11
May 2007	2,369.58	05/26/2007 00:00:00	81,758.7€	05/11/2007 00:00:00	1,808,751.95	58,346.84

\*Min Value Excludes Zeros

### Load Factor\*\*

Site Label	Load Factor
May 2008	65.23%
May 2007	64.94%

\*\*Only those sites with either kW or kWh selected can display load factor.

## DEMAND PROFILE (PGS 27-28)

### #6 – DEMAND PROFILE

The demand profile report shows single or aggregated site peak demand over a selected period of time.

#### 1. Pick a time (Use Calendar)

Start Date: 05-01-2008

End Date: 06-01-2008

#### 2. Choose your options

Select a site: Entergy College Building

Create a: Bar Graph

Time zone: US/Central

## Input:

### Entergy Sample Demand Profile Query

Data is available from Wednesday, November 28, 2001 10:30:00 AM to Monday, June 16, 2008 02:00:00 PM  
Availability of data may vary from site to site.

1

#### Pick a time range

Start Date:

End Date:

2

#### Choose your options

Select A Site:

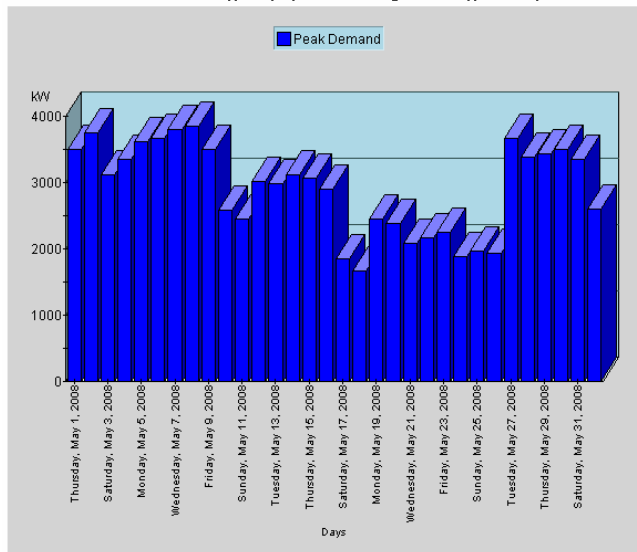
Create a:

Time Zone:

## Results:

Results can be viewed in either graphical or tabular format.

Entergy Sample - Entergy College Bldg  
Demand Profile for Thursday, May 1, 2008 through Sunday, June 1, 2008



Entergy Sample - Entergy College Bldg  
Demand Profile for Thursday, May 1, 2008 through Sunday, June 1, 2008

Day	Peak Demand
Thursday, May 1, 2008	3,504.51
Friday, May 2, 2008	3,749.45
Saturday, May 3, 2008	3,117.47
Sunday, May 4, 2008	3,345.74
Monday, May 5, 2008	3,618.76
Tuesday, May 6, 2008	3,666.77
Wednesday, May 7, 2008	3,803.17
Thursday, May 8, 2008	3,847.36
Friday, May 9, 2008	3,500.06
Saturday, May 10, 2008	2,587.95
Sunday, May 11, 2008	2,457.17
Monday, May 12, 2008	3,012.40
Tuesday, May 13, 2008	2,981.24
Wednesday, May 14, 2008	3,124.12
Thursday, May 15, 2008	3,070.88

## #7 – LOAD DURATION CURVE (PGS. 28-30)

The load duration curve report allows you to determine the percentage of time that a site' s demand meets or exceeds a given level.

1. Pick a time: **This Month**

2. Choose your channels

Entergy College Building

✓ kW

Entergy Hospital

✓ kW

Entergy Industrial

✓ kW

3. Decide how you want to see it

Create a: **Interactive Graph**

Display Demand as: **Percentage**

## Input:

### Entergy Sample Load Duration Curve

Data is available from Wednesday, November 28, 2001 10:30:00 AM to Monday, June 16, 2008 02:45:00 PM

Availability of data may vary from site to site.

1

#### Pick a time

All Interval data is requested and displayed using interval ending time.

E.g. To request a single day's data, select/enter Start Date: 01/01/2003 00:15  
End Date : 01/02/2003 00:00

Choose a period from this list:

2

#### Choose your channels

Entergy College Bldg [ Daily V ] 01-07-2003 to 06-16-2008

kW  kVar  kVa

Entergy Hospital [ Hourly V ] 02-11-2004 to 06-16-2008

kW  kVar  kVa

Entergy Industrial [ Daily V ] 11-28-2001 to 06-16-2008

kW  kVar  kVa

3

#### Decide how you want to see it

Create a:

Display demand as:

## Results:

