

ABBEVILLE HARBOR & TERMINAL DISTRICT



LOCATION

Main Office – 124 North State Street, Abbeville, Louisiana

Port Facilities – 8 miles south of Abbeville on the West Bank of the Vermilion River and 8 miles north of the GIWW and Freshwater Bayou (FWB) Access is via FWB and GIWW with a controlling depth of 12 feet.

ORGANIZATION

The Abbeville Harbor and Terminal District was created by Act No. 253 of the 1954 regular session of the Louisiana Legislature. It is governed by board of commissioners consisting of 6 members who serve for a 6-year term. The Board of Commissioners serves without compensation and is charged with regulating matters relating to commerce, navigation and traffic in the best interest of the public.

PORT COMMISSIONERS

Carlton Campbell
Tim Creswell

Wayne LeBleu
Gerald Libersat

James Noel
Bud Zaunbracher

PORT DIRECTOR

Jay Campbell, Executive Director

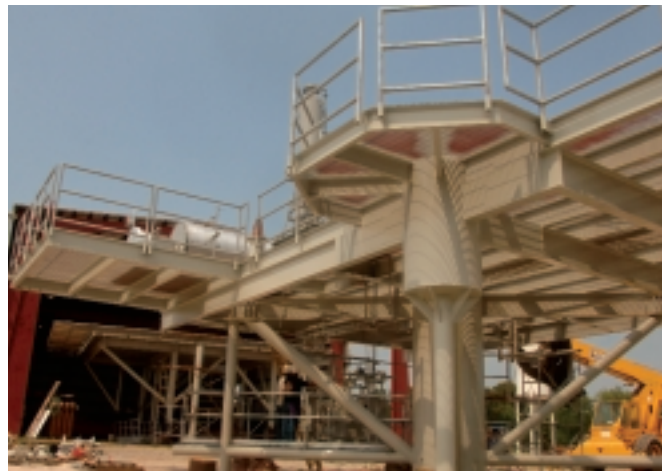
PRIMARY CARGOES

Inbound: Oilfield deck, jacket and piping, offshore living quarters, USCG approved modules, salvage and refurbishment of offshore decks and jackets.

Outbound: Same

OVERALL ANNUAL TONNAGE 2005

District wide 4.5 million tons



REVENUES (2006)

| | |
|-----------------------------|------------------|
| Gross Operating Revenue | \$239,178 |
| Tax and Other Revenues | \$ 33,164 |
| TOTAL GROSS REVENUES | \$572,342 |

TOTAL EMPLOYEES

2 Permanent employees

850 Port of Vermilion employees at port industries

MAIN CHANNEL DEPTH

12 foot controlling depth

CRUISE TERMINALS & FACILITIES – N/A

CARGO TERMINALS & FACILITIES

Privately operated in Intracoastal City, Freshwater City and Port of Vermilion

OTHER PORT-OWNED BUSINESSES, SERVICES AND FACILITIES

Freshwater Bayou By-Pass Navigation Control structure at southern terminus of Freshwater Bayou to the U.S. Gulf of Mexico. This structure was constructed for large-scale projects too wide to utilize U.S. Army Corps of Engineers lock facility. Intracoastal City Public Boat Launch for fishing and pleasure craft.

OTHER PORT AREA SERVICES

United States Coast Guard Cutter Pelican located at The Port of Vermilion.

ABBEVILLE HARBOR & TERMINAL DISTRICT
(PORT OF VERMILION)

P.O. Box 1410, Abbeville LA 70511-1410

Tel: 337-893-9465 Fax: 337-898-0751

ahtd2@bellsouth.net