



Customer Installation Standards Update

Approved Options

Underground Power Panels
(combo meter pan and breakers)

Or

Single UG meter pans
(used with separate breaker panels)

Effective
Last Revision

June 2008
April, 2013

Entergy approves the pan styles displayed in this presentation and does not recommend or endorse any item shown. Manufacturers are listed in no particular order.

Midwest UG Power Panel

Example shown: Model #

ETG series



General Description for all UG fed, combo meter pan and breaker panel:

- No wire bending required;
- Utility wire-way separately and independently covered and secured;
- Customer wire-way separately and independently covered and secured;
- May be side-wired or bottom-connected;

(Model numbers may vary based on amperage, number of breakers allowed and whether aluminum or steel)

...or...the single UG meter pan with side-wire connections and separate breaker panel is still acceptable.



Midwest

Example shown: Model #

UTRS223AMEP

Entergy approves the pan styles displayed in this presentation and does not recommend or endorse any item shown. Manufacturers are listed in no particular order.

Eaton UG Power Panel

Example shown: Model #

MBE48B200BTS



General Description for all UG fed, combo meter pan and breaker panel:

- No wire bending required;
- Utility wire-way separately and independently covered and secured;
- Customer wire-way separately and independently covered and secured;
- May be side-wired or bottom-connected;

(Model numbers may vary based on amperage, number of breakers allowed and whether aluminum or steel)

...or...the single UG meter pan with side-wire connections and separate breaker panel is still acceptable.



Eaton-Durham

Example shown: Model #

UTRS223ACH

Milbanks UG Power Panel

Example shown: Model #

U5898-O-200



General Description for all UG fed, combo meter pan and breaker panel:

- No wire bending required;
- Utility wire-way separately and independently covered and secured;
- Customer wire-way separately and independently covered and secured;
- May be side-wired or bottom-connected;

(Model numbers may vary based on amperage, number of breakers allowed and whether aluminum or steel)

...or...the single UG meter pan with side-wire connections and separate breaker panel is still acceptable.



Milbank

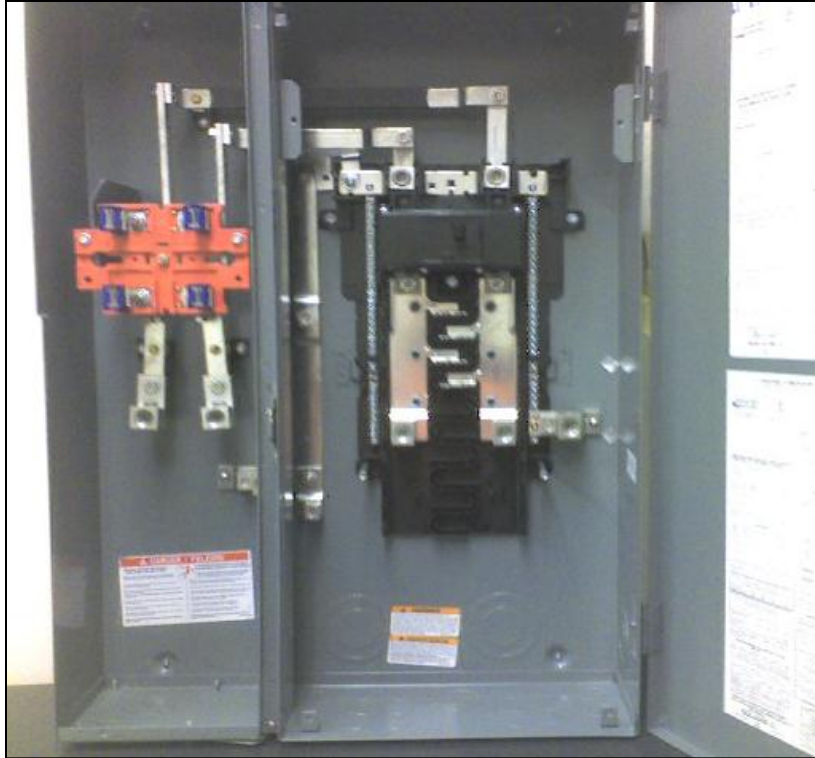
Example shown: Model #

U1980-O

Square D UG Power Panel

Example shown: Model #

SC816F200S

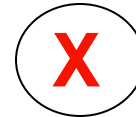


General Description for all UG fed, combo meter pan and breaker panel:

- No wire bending required;
- Utility wire-way separately and independently covered and secured;
- Customer wire-way separately and independently covered and secured;
- May be side-wired or bottom-connected;

(Model numbers may vary based on amperage, number of breakers allowed and whether aluminum or steel)

...or...the single UG meter pan with side-wire connections and separate breaker panel is still acceptable.



Entergy approves the pan styles displayed in this presentation and does not recommend or endorse any item shown. Manufacturers are listed in no particular order.

Siemens UG Power Panel

Example shown: Model # **MC0816B1200RTD**

and Landis & Gyr UG Power panel

Example shown: Model # **LG0816B1200RTD**

(Siemens brands their pans for both companies.)

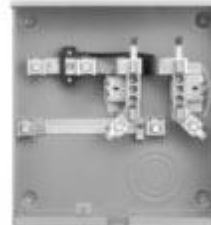


General Description for all UG fed, combo meter pan and breaker panel:

- No wire bending required;
- Utility wire-way separately and independently covered and secured;
- Customer wire-way separately and independently covered and secured;
- May be side-wired or bottom-connected;

(Model numbers may vary based on amperage, number of breakers allowed and whether aluminum or steel)

...or...the single UG meter pan with side-wire connections and separate breaker panel is still acceptable.



Example shown: Model #

Siemens
SUAS877-PG

Example shown: Model #

Landis & Gyr
UAS877-PG

Entergy approves the pan styles displayed in this presentation and does not recommend or endorse any item shown. Manufacturers are listed in no particular order.